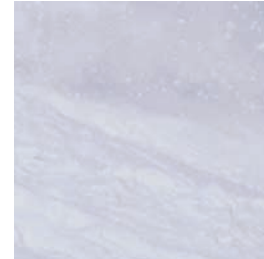
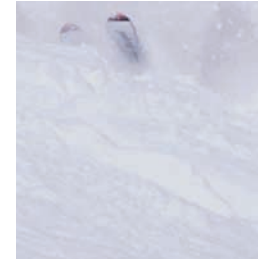
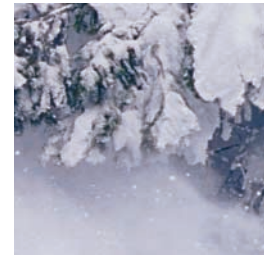
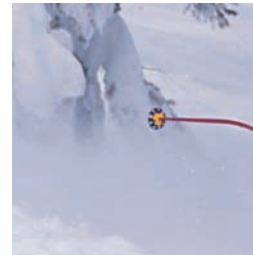
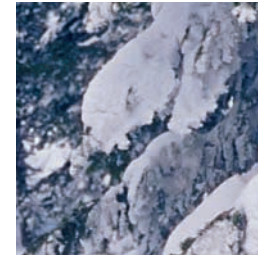
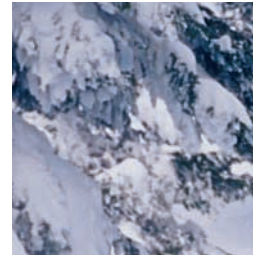
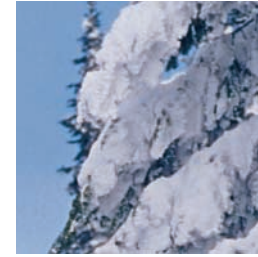


Los Angeles Council of Ski Clubs
2005-2006 Directory





©2005 Vail Resorts. All rights reserved. All trademarks are the property of their respective owners.

SNOWBOUND

START COUNTING THE DAYS,
YOU'RE ALMOST HERE.

**GREAT OFFERS
INCLUDING
NON-STOP
AIR FROM
LAX TO VAIL**

VAIL

from **\$677*** per person

BEAVER CREEK

from **\$588*** per person

Offers include round-trip airfare on American Airlines from Los Angeles (LAX) to Vail/Eagle County Airport (EGE), 4 nights' lodging and a 4-day lift ticket.

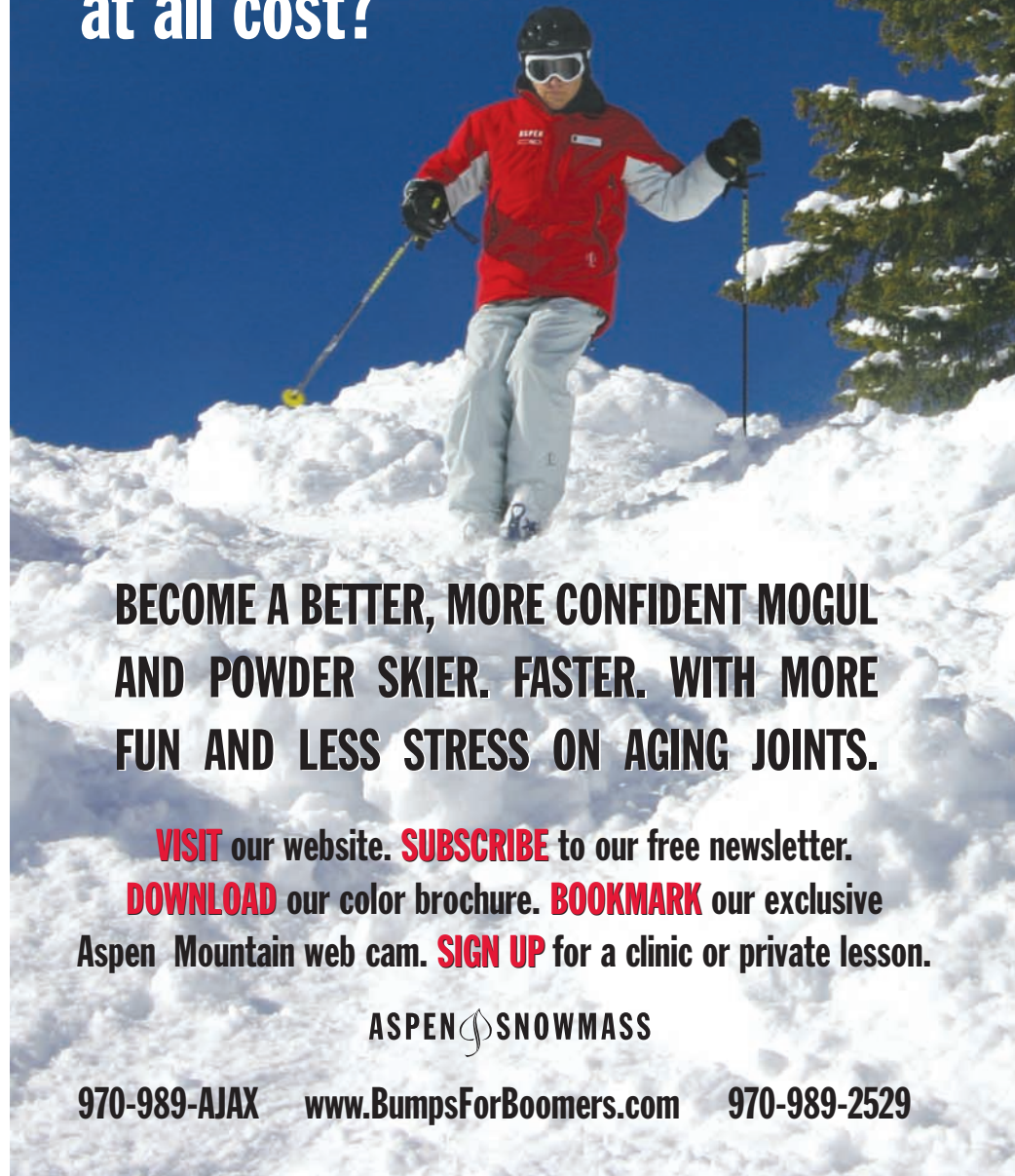
*Packages based on quad occupancy in a 2-bedroom condo. Valid Thursday - Monday, 1/5/06 - 1/30/06. Taxes and surcharges not included. Subject to change and availability. Other restrictions may apply.

American Airlines flies non-stop from LAX to Vail every Thursday through Monday from 12/15/05 - 1/31/06 and daily from 2/3/06 - 4/1/06.

For further information or to book a trip, call **866.736.8545** or visit **snow.com/lax**.



Do you feel **COMFORTABLE** on **GROOMED RUNS** but **AVOID MOGULS** at all cost?



BECOME A BETTER, MORE CONFIDENT MOGUL AND POWDER SKIER. FASTER. WITH MORE FUN AND LESS STRESS ON AGING JOINTS.

VISIT our website. **SUBSCRIBE** to our free newsletter.
DOWNLOAD our color brochure. **BOOKMARK** our exclusive
Aspen Mountain web cam. **SIGN UP** for a clinic or private lesson.

ASPEN  SNOWMASS

970-989-AJAX

www.BumpsForBoomers.com

970-989-2529

Non-Stop



Flights from
Los Angeles on
Horizon Air




Now your lift ticket can give you all kinds of lifts

Sure everyone comes to Sun Valley for the world-class skiing and snowboarding, but with so much more to do around here, no one would blame you for not spending every single day on the mountain. Especially with our Lift Ticket Exchange program. Simply exchange any unused day on your multi-day pass for a romantic sleigh ride, fine dining, or maybe even a much-needed massage. It's your call, and the possibilities are endless.

For Group Reservations and
Information call 1.800.322.3432
www.sunvalley.com



THE BIOGRAPHY OF LONE PEAK

Old Man Winter and
Mother Nature had a torrid affair.
This  is their love child.



The big news this winter is from one of the largest mountains in North America. The new Big Sky-Moonlight interconnect gives you access to 5,300 acres of terrain all in one area. And with great lodging deals for ski clubs, it's the ultimate mountain vacation. Big Sky, Montana. A place all your own.

www.bigskyresort.com
1.800.548.4487





The storm was three days ago.

More powder. Fewer skiers.

Tamarack is hardly a mega resort, and you'll find that's a good thing. By limiting daily skiers and opening a vast new tract of lift-accessible acreage, we've not only created a powder skier's Mecca but also the ski resort of the future. Be their hero, this year bring your club to Tamarack Resort.



For lift and lodging packages contact
Tamarack Resort Leisure Group Sales at
877-TAM RESORT or TamarackIdaho.com



A boutique resort for all seasons.



**America's only all-inclusive ski resort
is more luxurious than ever.**

Club Med Crested Butte combines the luxury of an upscale ski lodge with the convenience of the Total All-Inclusive™ experience to create America's ultimate ski vacation. Guests of all ages will enjoy ski instruction, lift tickets, gourmet cuisine and world-class, ski-in/ski-out accommodations as part of their Club Med vacation, as well as the legendary entertainment options and award-winning Children's Clubs that have made Club Med famous for over 50 years. It's no wonder that so many consider Club Med Crested Butte one of the world's great ski destinations.

Call 1-800 CLUB MED or your travel agent, or visit clubmed.com.



We make it easy!

With the best contacts in the industry and the largest dedicated group staff in the business, our team will deliver the service you expect and the vacation you deserve. For all the major resorts in North and South America, Europe, and New Zealand, we've got you covered. Contact 800-672-3260 or groups@ski.com.



Adventure World Travel for Over

Table of Contents

Welcome	9
About Los Angeles Council	11-13
Los Angeles Council 2006 Ski Week to Telluride, Colorado	34
Los Angeles Council 2006 Ski Week to Snowbasin / Powder Mountain, UT	35
Los Angeles Council 2006 Ski Week to Kitzbühel, Austria	36
Clubs of Los Angeles Council	14-27
Club Trips by Date	28-29
Club Trips by Destination	30-31
Club Trips to Mammoth	32-33
Los Angeles Council 2005 - 2006 Race Program	12
Advertisers— Please support our advertisers on the services they provide!	
Aspen / Snowmass, Colorado	29
Big Sky Resort, Montana	3
Bumps for Boomers	1
Club Med	5
Intrawest, North America	Back Cover
Jackson Hole, Wyoming	10
Resorts of the Canadian Rockies, Canada	8
Ski Banff, Lake Louise, Sunshine Village, Canada	Inside Back Cover
SKI.COM	6
Sun Valley, Idaho	2
Tamarack, Idaho	4
Vail Resorts, Colorado	Inside Front Cover

Directory Credits

Catherine Ohl (ohl@acatmeowz.com)	LAC Council & Advertising
A Cat Meowz Graphic Designz (www.acatmeowz.com)	Graphics & Design
Millennium Media (310-581-0761)	Printing

No information contained herein can be reprinted without the express written permission of the Los Angeles Council of Ski Clubs.

Los Angeles Council of Ski Clubs, P. O. Box 83338, Los Angeles, CA 90083
www.lacouncil.org

CANADA

Great Skiing and Après-tivities

KIMBERLEY ALPINE RESORT

7 nights/5 days – studio condo
Pricing includes one free night;
Daily hot continental breakfast
From USD\$499

FERNIE ALPINE RESORT

7 nights/5 days – one bedroom condo
From USD\$574

Activities and Après Ski Options

- Fun Race – Ski Day, Fun Giant Slalom Races
- Skating, snow shoeing, Nordic skiing
- dog sledding, Torch Light Parades
- Campfires with skating
- On Mountain fine dining, lounge and pub gatherings
- Star Gazing Snowshoe Fondue Night

Prices are per person in US dollars, based on double occupancy, exclusive of hotel taxes.
Prices may vary based on availability and season. Rates may change without notice.



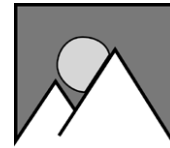
RCR
Resorts of the Canadian Rockies
Experience the Ultimate

FERNIE
Alpine Resort
Legendary Powder

Kimberley
Alpine Resort



Call: 1.877.308.7669(SNOW)
or go online to: **WWW.SKIRCR.COM**



Los Angeles
Council of Ski Clubs

President's Welcome

Los Angeles Council of Ski Clubs represents recreational and social clubs throughout the Los Angeles, San Bernardino and Ventura basins. As such, you have the opportunity to go to the beach in the morning and the local mountains in the afternoon or vice versa. But whichever way you choose, the Los Angeles Council of Ski Clubs offers activities, be it social or recreational, throughout the year.

You'll enjoy recreational activities including: skiing, snowboarding water skiing, river rafting, kayaking, volleyball, golfing, hiking and biking, to name just a few. Social activities such as happy hours, dinners, dancing, wine tastings, cruises, concerts, plays and trips abound.

Speaking of trips, LA Council will participate in three winter trips: one to Telluride, CO [February 4-11, 2006], Snowbasin & Powder Mountain, Utah [February 23-27, 2006] and Kitzbuhel, Austria [March 17-25, 2006] which features a pre-trip to Prague [March 14-18, 2006].

Every week during the winter season you can find a club going to Mammoth for the weekend where you can race or just cruise the mountain. To get you in shape for either cruising or racing, LAC offers a camp to learn to ski, snowboard or race at Mammoth in December. Whether you're a novice or expert skier/snowboarder, this is a great opportunity to hone your skills. And you can't beat the price!

Besides numerous year-round activities, you'll find numerous discounts to partake in by joining a member club of the Los Angeles Council of Ski Clubs. So come and join us!

Whatever you're looking for you'll be able to find it on the Los Angeles Council of Ski Clubs website at **www.lacouncil.org.**

See you soon,

Rinda

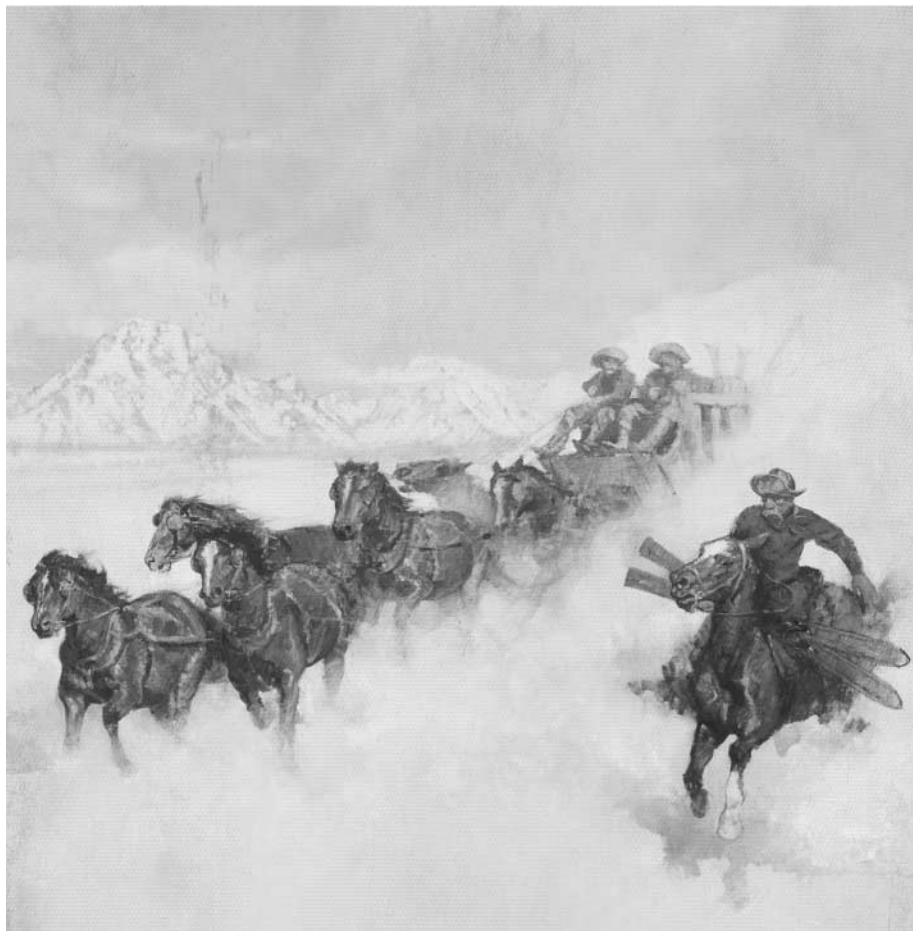
Rinda Wohlwend,
President Los Angeles
Council of Ski Clubs



LA Council Presidents at 2005 Far West Convention —

John Watson '69-70
Grady Smith '89-90
Jacquie Nemor '03-05
Ed Knott '00-03
Bonnie West '98-00
Clarence Ballenger '93-94

Rinda Wohlwend '05+
Sigrid Noack '96-98
Ray Craig '91-93, '94-96
Jane Wyckoff '75-77
Gene Fulkerson '83-85



JACKSON HOLE
"Powder day"

Proud
VACATION OUTPOST
FOR ROWDY GROUPS
SINCE **1810.**

Each winter, Jackson Hole Mountain Resort entertains thousands of group visitors with our world-class ski and snowboard terrain, beautiful scenery, and countless Après activities. So tune up your gear, clear your schedule, and book your club's winter getaway today!

FOR INFORMATION CALL 307-739-2610 OR
CONTACT GROUPS@JACKSONHOLE.COM

LA Council is for you!

The Los Angeles Council of Ski Clubs (LAC) is comprised of about 30 ski and snowboard clubs located throughout the greater Los Angeles basin. L.A. Council is one of ten councils within Far West Ski Association (FWSA) with two leagues in the Far West Race Association (FWRA) and a Charter Member of the National Ski Council Federation (NSCF).

The Clubs

If skiing or boarding is your passion, our clubs are for you! Check out the trips already planned for 2005/06 — Mammoth, Big White, Sunshine Village, Lake Louise, Sun Valley, Big Sky, Whistler, Jackson Hole, Tamarack, Club Med, Aspen/Snowmass, Vail, — to name just a few. On club trips you will find others with whom you can ski, snowboard and party.

Most clubs are year-round with a plethora of activities! Look for a club in your area and join. Benefits include discounted ski trips and other fun events, including roller blading, water skiing, pool parties, T.G.I.F's, dinners, wine tastings, theater, working with physically challenged skiers, public affairs programs for improvement and expansion of ski areas, safety, and, of course, lots of fun.

As an LA Council club member, you can participate in all aspects of the LA Council, Far West Ski Association, Far West Race Association and National Ski Council Federation.

LAC

LAC provides links to our member club's web sites, interaction between clubs, a booth at Ski Dazzle and an opportunity for our clubs to earn money working the Ski Swap, an annual Ski Week (or three), recognition for the club's Man and Woman of the Year at the annual (mostly formal) Snow Gala, Races, Volleyball Leagues, administration support, a bi-monthly newsletter and a listing in this Directory.

LAC meets the first Monday of the month at —

Grinder Restaurant, 8521 S. Sepulveda Blvd., (at Manchester), Westchester.

FWSA

FWSA provides clubs three Annual Ski Trips (North America, Europe, Southern Hemisphere), a listing in the "Far West Skier's Guide" which is distributed to sport shops in several states, an annual convention to facilitate networking between ski clubs and the ski industry, and recognition for the Council's Man and Woman of the Year.

FWRA

FWRA is the governing organization for our race leagues and runs the annual FWRA Championships.

**Check through this Directory to find a Ski Club to meet your needs—
and you will never lack for something fun to do!**





Racing for Fun!

You don't have to be a Daron, Killy, Mahre or McKinney to race with LA Council! In addition, you'll find that going around the gates will improve your skiing and boarding ability. Skiers and boarders are divided into different levels, so you race against others who ski or board at your level.

Race levels range from the ultimate beginner, through a range of classes, to the truly accomplished elite racer. A total of ten classes ensure that racers are competing with similar racers. Additionally, our Weekend World Cuppers race by age and gender in open and vet (old farts) categories. As you start winning your class, you may be bumped up to the next ability class for additional competition.

The transition from skier or boarder to racer is an easy one—particularly for those who already belong to an LAC club. Just sign up the next time your favorite club is racing. If you are hesitant about racing for the first time, or wish to bone up on your skills, LA Council offers two early season race camps at Mammoth Mountain, CA.

Date	League	Race	Resort
December 4-9, 2005	Rokka Ski & Board Camp	Training	Mammoth
December 9-18, 2005	LAC Ski & Board Camp	Training	Mammoth
December 7-11, 2005	Keystone Nationals	Ski Club Challenge	Keystone
December 10, 2005	Rokka I	Giant Slalom	Mammoth
December 11, 2005	Ullr I	Giant Slalom	Mammoth
January 7, 2006	Ullr II	Slalom	Mammoth
January 8, 2006	Rokka II	Slalom	Mammoth
January 28, 2006	Rokka III	Giant Slalom	Mammoth
January 28, 2006	Ullr III	Giant Slalom	Mammoth
Feb 4-11, 2006	FWSA Ski Week	Giant Slalom/Slalom	Telluride
March 4, 2006	Rokka IV	Slalom	Mammoth
March 5, 2006	Ullr IV	Slalom	Mammoth
March 17-19, 2006	Far West Championships	Giant Slalom/Slalom	Kirkwood
April 25-26, 2006	So-Cals Championships	Giant Slalom	Mammoth

There are two race leagues in LA Council which are members of the Far West Race Association (www.fwra.com). If your club doesn't participate in racing, but you want to, contact the appropriate League Chairperson listed below.

League	Chairman	Email	Phone
Ullr	Ken Kawahara	raceskier@earthlink.net	310.546.7953
Rokka	Patrick Bennett	rokkaracers@aol.com	818.364.8923

LAC Board of Directors



Rinda Wohlwend

President

president@lacouncil.org
626.446.4879



Iris Williams

VP Membership

membership@lacouncil.org
310.638.2826



Jacquie Nemor

Past-President

pastpresident@lacouncil.org
310.399.0945



Mary Albritton

VP Programs

programs@lacouncil.org
562.856.0922



Karen James

Secretary

secretary@lacouncil.org
818.249.5982



Catherine Ohl

VP Communications

communications@lacouncil.org
858.467.9469



Ray Craig

Treasurer

treasurer@lacouncil.org
805.496.6720



Kathy Faris

VP Competition

competition@lacouncil.org
310.470.2522

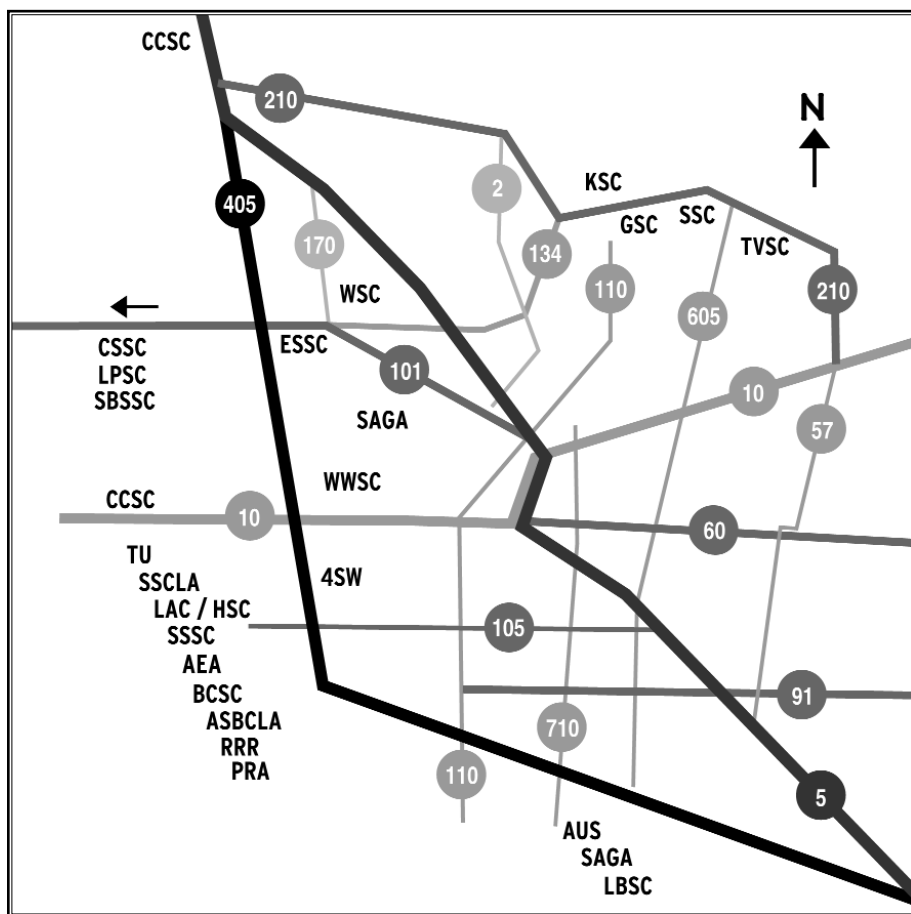


Bonnie West

VP Travel

travel@lacouncil.org
562.699.8880

LA Council's Club Meeting Locator



Index of LA Council's Ski Clubs

AEA	Aerospace Employee's Association . . . 15	OTHG	Over The Hill Gang - LA 22
ASBCLA	Asian Ski & Board Club of LA 15	PRA	Pacific Rim Alliance 22
AUS	Auslich Ski & Recreation Club . . . 16	RRR	Radar River Rats 23
BCSC	Beach Cities Ski Club 16	SAGA	Saga Ski & Snowboard Club 23
CCSC	CCSC Sports Club 17	SBSSC	Santa Barbara Ski & Sport Club . . 24
CSSC	Conejo Ski & Sports Club 17	SSCLA	Single Ski Club of LA 24
ESSC	Edelweiss Ski & Sports Club 18	SSSC	Slope Surfers Ski Club 25
4SW	Four Seasons West Ski Club 18	SSC	Snow Busters Ski Club 25
GSC	Grindelwald Ski Club 19	TU	The Unrecables 26
HSC	Hughes Ski Club 20	TVSC	Tri Valley Ski Club 26
KSC	Kronenstadt Ski Club 20	WSC	Wailers Ski Club 27
LBSC	Long Beach Ski Club 21	WWSC	Westwood Ski & Sports Club 27
LPSC	Los Padres Ski Club 21		

Aerospace Employee's Association Ski Club



www.aeclubs.org/ski/index.html
 AEA Ski Club / ATTN: Wayne Sult (M1-400)
 P.O. Box 92957, Los Angeles, CA 90009-2957

The AEA Ski Club promotes snow skiing and other social activities throughout the year. Membership is made up of employees of the Aerospace Corp., civilian and military personnel of the Air Force, dependents, and friends.

Meetings- Stick N Stein
 707 N. Sepulveda, El Segundo, CA 90245
 1st Tuesday, 5:30 PM

Dues- Individual \$25 [Aerospace], \$30 [Others]

Race League- Ullr

Activities- Bus Trips, Out-of State Skiing, Racing, TGIFs, Parties, Golf

Trips- Mammoth, Telluride

President- Kent Bradford kent.b.bradford@aero.org / 310-336-5137

Membership- Glen Brewer glen.e.brewer@aero.org / 310-336-5380

Asian Ski & Board Club of LA

Asian Ski & Board Club of L.A.
www.asbcla.org
 P.O. Box 5022, Redondo Beach, CA 90278

The Asian Skiing and Boarding Club of Los Angeles is a social and service organization for the support of skiing, snowboarding, and active lifestyles. The club produces several ski trips each winter, accompanied by various year-round social activities.

Meetings- Visit web site for the current month's mixer

Dues- Individual \$30, Couple \$45

Race League- Ullr

Activities- Skiing, Snowboarding, Hiking, Fishing, Climbing, Theater, Social & Charity Events

Trips- Mammoth, Banff

President-

Membership- Candice Ota c.ota2@verizon.net / 310-397-7472

Auslich Ski & Recreation Club of Belmont Shore



www.auslichskiclub.org
P.O. Box 92434, Long Beach, CA 90809-2434

The Auslich Ski & Recreation Club of Belmont Shore is an active, year-round social & recreation club based in the Belmont Shore area of Long Beach for over thirty years. Membership is open to men, woman, singles and couples, 21 years and older.

- Meetings-** Khoury's Restaurant
110 Marina Dr., Long Beach, CA 90803
1st & 3rd Tuesday, 7 PM [Social], 7:30 PM
- Dues-** Individual \$35, Couple \$55
- Race League-** Ullr
- Activities-** Skiing, Water Skiing, Golf, Kayak, Bike, Rollerblade
- Trips-** Mammoth, Telluride, Snowbasin, Powder Mountain
- President-** Kenneth Kern president@auslichskiclub.org / 562-423-7249
- Membership-** Susan Onyan membership@auslichskiclub.org / 562-494-8816

Beach Cities Ski Club



BEACH CITIES SKI CLUB

www.bcskiiclub.org
P.O. Box 313, Hermosa Beach, CA 90254
310-316-9801

Beach Cities Ski Club promotes skiing and volleyball, in addition to numerous sports and social activities throughout the year. You'll never be bored joining BCSC.

- Meetings-** Mr. Pockets Sports Bar
516 N. Sepulveda Blvd., Manhattan Beach, CA
2nd & 4th Tuesday [Summer- 2nd Tuesday], 8 PM
- Dues-** Individual \$39, Couple \$59, Initiation Fee \$5
- Race League-** Rokka
- Activities-** Skiing, Racing, Volleyball, Tennis, Rafting, Camping, Annual Clambake, Social Events
- Trips-** Mammoth, Moonlight Basin
- President-** Nick Gillett president@bcskiiclub.org / 310-492-5026
- Membership-** Nick Gillett membership@bcskiiclub.org / 310-492-5026

Century City Ski Club



www.ccscsports.org
P.O. Box 67187, Los Angeles, CA 90067

CCSC is an active year round recreation and social club. Initially, most of the members were drawn to the club because of snow and water sports and travel. They have remained because of the friendships made through shared experiences and social interaction.

- Meetings-** Hamburger Hamlet Earth, Wind & Flour
27430 The Old Road, Valencia 2222 Wilshire Blvd., Santa Monica
1st Tuesday, 7 PM 3rd Tuesday, 7 PM
- Dues-** Individual \$30, Couple \$60
- Race League-** Ullr
- Activities-** Skiing, Racing, Houseboating, Biking, Volleyball, Kayaking, Wine Tasting, Parties
- Trips-** Mammoth, Aspen, Alyeska
- President-** George Offshack president@ccscsports.org / 661-269-0147
- Membership-** Larry Davis membership@ccscsports.org / 661-254-9304

Conejo Ski & Sports Club



www.conejoski.org
P.O. Box 6276, Westlake Village, CA 91359

Conejo Ski & Sports Club provides Ventura County a year-round social club where ACTIVE adults can meet. CSSC strives to provide a healthy forum, away from the bar scene, where members can socialize, meet new friends, and share new experiences at affordable prices.

- Meetings-** Clarion Palm Garden Hotel [Eric's Lounge]
495 N.Ventur Park Road at 101 Fwy., Newberry Park, CA
1st & 3rd Wednesday, 7 PM [Social], 8 PM
- Dues-** Individual \$45, Couple \$65, Family \$65
- Race League-** Ullr
- Activities-** Snow & Water Skiing, Racing, Hiking, Biking, Golf, Tennis, Bridge
- Trips-** Mammoth, Telluride, Snowbasin, Powder Mtn., Kitzbühel, China
- President-** Roslyn Hart president@conejoski.org / 805-373-0810
- Membership-** Christine Houghton membership@conejoski.org / 805-630-1858

Edelweiss Ski & Sports Club



www.edelweissclub.org/
P.O. Box 2715, Van Nuys, CA 91405

Edelweiss is a year round Ski and Sports Club located in Southern California. Although initially formed to promote the sport of snow skiing, they do it all now—play volleyball in the sand in the summer, hit

the tennis ball on Saturdays, attend cultural events as available, and so much more.

- Meetings-** Lamplighter Restaurant
5013 Van Nuys Blvd., [N of 101 Fwy], Sherman Oaks, CA
1st & 3rd Tuesday, 8 PM
- Dues-** Individual \$35, Couple \$45
- Race League-** Rokka
- Activities-** Skiing, Racing, Biking, Tennis, Volleyball, Camping, Culture & Social
- Trips-** Mammoth, Breckenridge
- President-** Joan Stewart jrstew@earthlink.net / 818-340-4968
- Membership-** Roy Megahan jodtburt@earthlink.net / 818-780-5736

Four Seasons West Ski Club



www.4sw.com
P.O. Box 11642, Marina del Rey, CA 90295

The 4 Seasons West Ski Club, Inc., a founding member of NBS, is dedicated to advancing the snow sports in general and, in particular, promoting the sport of skiing within central and western Los Angeles. 4SW also has a very active Youth Program.

- Meetings-** 4 Points by Sheraton
5990 Green Valley Circle, Culver City, CA 90230
1st Tuesday, 7 PM [Social], 8 PM
- Dues-** None
- Race League-** Ullr
- Activities-** Skiing, Racing, Youth Program, Cycling, Scuba, Tennis, Rafting, Golf
- Trips-** Mammoth, Aspen, Heavenly, Banff, Snow Valley, Mountain High
- President-** David Geiger 714-991-8428
- Membership-** David Kidd dk5@sbcglobal.net / 310-396-9546

Grindelwald Ski Club



www.grindelwaldskiclub.org
P.O. Box 91694, Pasadena, CA 91109-1694

Grindelwald is a very active club with many activities planned all year long. Dinner and social hour is approximately 7 PM every Thursday followed by the general meeting at 8 PM. The third Thursday of each month is special as they celebrate birthdays with homemade cake.

- Meetings-** El Portal
695 E. Green Street (Arcade Lane), Pasadena, CA
1st & 3rd Thursday, 8 PM
- Dues-** Individual \$30, Couple \$50
- Race League-** Rokka
- Activities-** Skiing Racing, Theater, Hiking, Camping, BBQs, Holiday Parties
- Trips-** Mammoth, Crested Butte
- President-** Norbert Knapp sandraeknapp@yahoo.com / 323-256-2775
- Membership-** Fred Kramer

2004 LA Council Man & Woman of the Year



Elaine Guidotto, Tri Valley, and **John Perkins**, Conejo, were voted Los Angeles Council's Man & Woman of the Year for 2004-2005.

Elaine & John proudly represented LA Council at the recent annual Far West Ski Association (FWSA) convention held in Long Beach on June 9-12, 2005. They did us proud. Congratulations!

Ski With Pride • Let It Ride • Watch All Sides

First With Safety Awareness

LAC Clubs

Hughes Ski Club



2417 N. Poinsettia Ave., Manhattan Beach, CA 90266

The Hughes Ski Club, a member club of the Hughes, Raytheon and Boeing Companies, is a very active group of "mature" people who enjoy all kinds of sports in the great outdoors.

- Meetings-** Grinder Restaurant Prince O'Whales
8521 S. Sepulveda Bl., Westchester 335 Culver Bl., Playa Del Rey
Oct-Apr—1st Wednesday, 6 PM May-Sept—1st Wednesday, 6 PM
- Dues-** Individual \$25, Couple \$40, Family +\$15 pp
- Activities-** Alpine & X-Country Skiing, Camping, Canoeing, Hiking, Golf, Hollywood Bowl, International Trips
- Trips-** Mammoth, Yosemite, Grant Grove
- President-** Steve Klinger klingersrmk@earthlink.net / 310-802-8190
- Membership-** Gerry Hittinger n6huqgerry@aol.com / 310-649-3409

Kronenstadt Ski Club



<http://geocities.com/kronenstadtski/>
P.O. Box 615, South Pasadena, CA 91031-0615

Kronenstadt, which means Crown City, is one of the longest standing ski clubs in Southern California. Kronenstadt runs monthly trips to Mammoth as well as other social functions throughout the year. They pride themselves on being one of the friendliest bunch of people around.

- Meetings-** As Needed
- Dues-** Individual \$35
- Activities-** Skiing, Snowboarding, Dinners, Travel, Tennis, Parties, Lots of Other Fun Stuff
- Trips-** Mammoth
- President-** Bruce Bailey bjbailey@netzero.net / 626-792-3460
- Membership-** Julie Hui juliehui@sbcglobal.net / 626.282.8464

Long Beach Ski Club

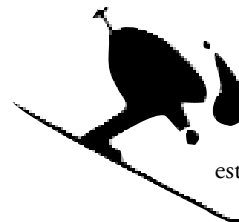


www.longbeachskiclub.org
P.O. Box 15291- Bryant Station, Long Beach, CA 90815
562-938-9664

The Long Beach Ski Club, founded in 1938, is a friendly community of fun-loving adults of all ages. LBSC is involved in skiing, snowboarding, cross country skiing of all levels and in many year round recreational and social activities.

- Meetings-** El Torito Restaurant
6605 E. Pacific Coast Highway, Long Beach, CA 90803
1st Wednesday, 6:30 PM [Social], 7:30 PM
- Dues-** Individual \$40, Couple \$55
- Race League-** Ullr
- Activities-** Skiing, Bicycling, Kayaking, Beach Volleyball, Tennis, Golf
- Trips-** Mammoth, Steamboat, Jackson Hole
- President-** Julie Elder president@longbeachskiclub.org / 562-437-3948
- Membership-** Emmajean McCreadie membership@longbeachskiclub.org/562-867-5085

Los Padres Ski Club



www.lospadreskiclub.net
P.O. Box 6112, Oxnard, CA 93031-6112

Los Padres Ski Club is the oldest club in L.A. Council, established in 1937 when a bunch of Ventura Country visionaries secured a 99-year land lease in the Los Padres National Forest. They built a rope tow and small warming hut. Now, it's a year round club with activities that include skiing, camping, biking and sailing.

- Meetings-** Anacapa Yacht Club
3821 S. Victoria Av., Channel Islands Harbor, Oxnard, CA
1st Thursday, 7:30 PM
- Dues-** Individual \$20, Couple \$30, Initiation \$15
- Race League-** Rokka
- Activities-** Skiing, Racing, Biking, Camping, Progressive Dinners, Concerts, Rafting
- Trips-** Mammoth, Telluride, Snowbasin, Andorra
- President-** Miguel Valdes LPSCpres@lospadreskiclub.net / 805-985-3786
- Membership-** Camille Hunter VPmem@lospadreskiclub.net / 805-647-0610

Over The Hill Gang - Los Angeles



www.lapeaktimesinnature.org

The Over the Hill Gang - Los Angeles is a non-profit organization for seniors. This group of individuals enjoy "peak times in nature" skiing, biking, hiking, kayaking, and picnicing. In addition, they kayak in such exotic locals as Cabo and Catalina.

- Meetings-** Location and times vary
Check website
- Dues-**
- Activities-** Hiking, Biking, Kayaking
- Trips-** Mammoth, Crested Butte
- President-** Jim Raymond suzannewithjim@aol.com / 818-360-0027
- Membership-** Renate Colvin renatecolvin@sbcglobal.net / 818-885-8492

Pacific Rim Alliance Snow Sports Club

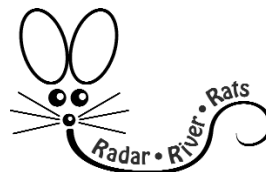


www.pacificrimalliance.org
P.O. Box 420552, San Diego, CA 92142
858-467-9469

The Pacific Rim Alliance is a non-profit organization dedicated to the real appreciation of snowboarding, skiing, sight-seeing, photography, travel, public awareness, adaptive ski programs and so much more. The Pacific Rim Alliance is open to all people regardless of race, religion, geographical area or age. Kid's welcome. You must be a member to go on one of their trips.

- Meetings-** Location & Dates Vary
- Dues-** Individual \$8, Family \$10
- Activities-** Snow Sports, Travel, Fund Raising for Jimmie Heuga Center for MS & Adaptive Ski Programs, Safety and Public Affairs
- Trips-** Val Thorens, Big Sky, New Zealand, Australia
- President-** Catherine Ohl ohl@acatmeowz.com / 858-467-9469
- Membership-** Gene Fulkerson membership@pacificrimalliance.org / 858-467-9469

Radar River Rats



www.radarriverrats.org
P.O. Box 3080, El Segundo, CA 90245

The Radar River Rats promotes snow and water skiing. They plan ten water ski weekends to the Colorado River with the intent to ski, have lots of fun and relax in the sun (or shade) with like-minded water and snow sports enthusiasts.

Membership in the Rats is open everyone including employees of Hughes and Raytheon. Their trips are great fun for the whole family!

- Meetings-** Board Member Home
Varies [[email meetings@radarriverrats.org](mailto:meetings@radarriverrats.org)]
1st Monday, 6 PM
- Dues-** Individual \$30, Family \$50
- Activities-** Water Sports, Boating, Safety, Public Awareness, Snow Skiing, Camping
- Trips-** Val Thorens, Big Sky, New Zealand, Australia
- President-** Catherine Ohl ohl@acatmeowz.com / 858-467-9469
- Membership-** Cathy Schulte membership@radarriverrats.org / 310-374-3026

Saga Ski & Snowboard Club



www.sagala.org
P. O. Box 93-1207, Los Angeles, CA 90093-1207
310-281-6761

Saga is a non-profit, volunteer-run club that was one of the first gay centered sports organizations in the US. Membership entitles you to substantial savings on their trips.

- Meetings-** Bel Age Hotel, City View Room El Torito Restaurant
1020 N. San Vicente Blvd. 3301 Atlantic Ave.
West Hollywood Long Beach
1st Sunday, 5 PM 1st Monday, 7 PM
- Dues-** Individual \$40, Partner +\$35
- Activities-** Skiing, Camping, Parties
- Trips-** Mammoth, Aspen, Whistler, Jackson Hole, South America
- President-** Logan Meyer president@sagala.org
- Membership-** Tim Blair membership@sagala.org

Santa Barbara Ski & Sports Club



<http://www.sbski.org/>
P. O. Box 6751, Santa Barbara, CA 93160
805-895-9636

Santa Barbara, a non-profit club, began as a skiing club only in 1955 but has evolved to a full summer and winter sports club with a very diverse schedule of ski, social and sports events. Membership is limited to adults over the age of 21, who enjoy sharing a positive view of life.

- Meetings-** Chase Palm Park Building
236 E. Cabrillo Blvd., Santa Barbara
1st & 3rd Wednesday [Sept-Apr], 7:30 PM
- Dues-** Individual \$40, Couples \$70
- Activities-** Skiing, Camping, Parties
- Trips-** Mammoth, Tahoe, Big Sky
- President-** Krista Morley kristamorley@aol.com / 805-687-6180
- Membership-** Jane Ferry jferry@co.santa-barbara.ca.us / 805-560-6744

Single Ski Club of Los Angeles



www.singleskiclub.org
P.O. Box 2684, Culver City, CA 90231-2684

Single Ski Club was founded in 1960 as a social milieu for those singles who enjoy skiing. The club has now expanded to become involved in many recreational, charitable and cultural causes. Active membership in the Single Ski Club is limited to 175 single adults, 21 years or older. Associate membership is available to former Single members who get married.

- Meetings-** Marriott Courtyard Hotel [meeting room next to the bar]
13480 Maxella, Marina del Rey, CA
1st, 3rd, 5th Wed, 6:30 PM [Social], 7:30 PM
- Dues-** Individual \$50, Associate \$60
- Race League-** Rokka
- Activities-** Racing, Biking, Wine Tasting, Concerts, Camping, Kayaking, Hiking
- Trips-** Mammoth, Vail
- President-** John Dwight president@singleskiclub.org / 310-392-5539
- Membership-** Mary Williamson membership@singleskiclub.org / 310-657-5151

Slope Surfers Ski Club



www.slopesurfers.org

The Slope Surfers Ski Club, a member club of the Hughes, Boeing, and Raytheon companies, extends membership to non-employees. The Slope Surfers run eleven 2-day bus trips to Mammoth along with three 3-day bus trips to Mammoth. They offer the best value for Mammoth from the South Bay for their club members and the members of their Sister Clubs— Beach Cities, South Bay, TRW and Hughes.

- Meetings-** As needed
- Dues-** Individual \$20, \$5 extra for each child under 18
- Activities-** Skiing, Snowboarding, Bus Trips to Mammoth, Parties
- Trips-** Mammoth
- President-** Chris Kishida president@slopesurfers.org / 213-742-1330
- Membership-** Wendy Brennan membership@slopesurfers.org / 310-358-3033

Snow Busters Ski Club



P.O. Box 90551, Pasadena, CA 91109

The purpose of the Snow Busters Ski Club is to introduce winter sports, especially alpine skiing, and other activities to their community. They are a family oriented club and encourage members to participate with their children. Snow Busters is a member of National Brotherhood of Skiers (NBS) and is challenged to find, select and fund African-American youth capable of capturing a spot on the US Ski Team.

- Meetings-** Margarita Jones
Arroyo Parkway & California, Pasadena, CA
2nd Tuesday, 7:30 PM
- Dues-** None
- Activities-** Skiing, Racing, Youth Programs, Camping, Houseboating, Diva's Day
- Trips-** Mammoth, Mountain High, Lake Tahoe, Banff, Park City
- President-** Jerry McGhee skiermon@verison.net / 626-353-0930
- Membership-** Celeste Coleman queencele2001@yahoo.com / 626-963-9827



The Unrecables

<http://home.earthlink.net/~unrecables>
 P.O. Box 24856, Los Angeles, CA 90024-0856
 310-558-4665

The Unrecables is a non-profit, volunteer-based organization serving the recreational needs of people with disabilities. The Unrecables actively promotes and facilitates participation in sports, recreation, and social activities for people with disabilities in their community.

Meetings- Mi Ranchito Restaurant, 12223 W. Washington Av., Los Angeles
 2nd Tuesday, 6:30 PM

Dues- Individual \$30, Family \$40, Life Time \$250, Initiation +\$10

Race League- Rokka

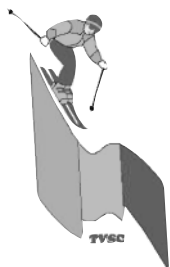
Activities- Skiing, Racing, Instructing, Mentoring, Social Activities, Sailing, River Rafting, Kayaking, Parties, Community Activities

Trips- Mammoth, Telluride

President- Inge Hobo-Scheinfarb neverland@sbcglobal.net / 310-558-4665

Membership- Michelle McCarthy mvdpt@yahoo.com / 310-417-8303

Tri Valley Ski Club



www.trivalleyskiclub.com
 P. O. Box 5495, Diamond Bar, CA 91765-5495
 909-996-3245

Tri Valley Ski Club, located in the Diamond Bar area is made up of a group of fun loving singles and couples of all ages who are active and enjoy adventure, the outdoors and social events. There is something for everyone's interest.

Meetings- Peppertree Café
 1020 E. Alostia Av. [Route 66], Glendora, CA
 1st [Sept-May] & 3rd Wednesday [June-Oct], 7:30 PM

Dues- Individual \$35, Families \$65

Race League- Ullr

Activities- Skiing, Cycling, TGIFs, Dinners, Parties, Rafting, Camping, Wine

Trips- Mammoth, Telluride, Kitzbühel, Prague, Snowbasin, Powder Mountain

President- Mary Albritton president@trivalleyskiclub.com / 562-856-0922

Membership- Patty Hamer membership@trivalleyskiclub.com / 909-985-3370

Wailers Ski Club



www.wailersskiclub.org
 P.O. Box 257, Glendale, CA 91209-0257

The Wailers Ski Club is a year-round adult social group with a penchant for snow riding. Being proud and fierce defenders of the wild life, you'll find skiers and riders kickin' it at parties, dinners, extreme adventures, trips and other activities that kill as well as expand brain cells.

Meetings- Acapulcos Mexican Restaurant
 3313 Olive Ave., Burbank, CA 91505
 1st & 3rd Wednesday, 8 PM

Dues- Individual \$35, Couple \$50, Applicant / Affiliates \$20

Race League- Rokka

Activities- Skiing, Racing, Water Sports, Wine Maker Dinners, Hiking, Rafting

Trips- Mammoth, Whistler

President- Todd Iketani president@wailersskiclub.org / 818-846-1775

Membership- Pete Smith membership@wailersskiclub.org

Westwood Ski & Sports Club



www.westwoodskiclub.org
 P.O. Box 24534, Los Angeles, CA 90024

Westwood Ski and Sports Club offers winter snow skiing at Mammoth with races every month and have been the Champions of the Rokka League for six out of the past seven years. New racers are welcome. In the summer, WWSC offers monthly water ski trips to Turner Cut on the Sacramento Delta.

Meetings- Location Varies and features gourmet dinners
 3rd Tuesday, 7 PM

Dues- Individual \$35, Couple \$50

Race League- Rokka

Activities- Skiing, Water Skiing, Gourmet Dinners, Inline Skating, Camping, Volleyball

Trips- Mammoth

President- Kathy Faris kkskier@aol.com / 310-470-2522

Membership- Kathy Faris kkskier@aol.com / 310-470-2522

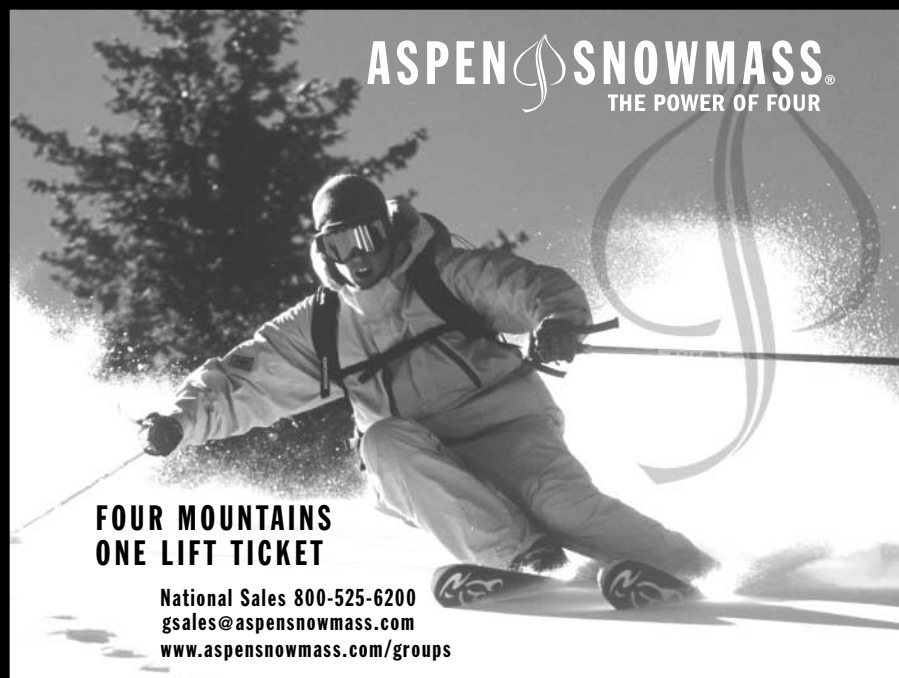
Trips by Date

Dates	Destination	Club *	Contact
Dec 03-08, 2005	Aspen/Snowmass, CO	4SW	David Geiger- 714.991.8428
Dec 07-11, 2005	Keystone, CO	FWRA	Kathy Faris- competition@lacouncil.org / 310.470.2522
Dec 17, 2005	Mountain High, CA	SBSC	Iris Williams- 310.638.2826
Dec 28 - Jan 1, 2006	Utah	CSSC	Ray Craig- skiing@conejoski.com / 805.496.6720
Jan 08-15, 2006	Crested Butte, CO	OTHGLA	Joanne Puleo- suzannewithjim@aol.com / 818.360.0027
Jan 12-16, 2006	Heavenly, CA	4SW	Stephanie Hemphill- 310.644.3099
Jan 12-16, 2006	Lake Tahoe, CA	SBSC	Iris Williams- 310.638.2826
Jan 13-16, 2006	Snowbasin, UT	LPSC	Sylvia Barnes- 805.648.7040
Jan 15-22, 2006	Aspen	SAGA	Jim Corbett- tripreservations@sagala.org
Jan 21, 2006	Mtn High, CA	4SW	David Kendrick- 323.293.3309
Jan 28 - Feb 4, 2006	Big Sky, MT	SBSSC	Greg Loshak- 805.565.2070
Jan 28 - Feb 4, 2006	Whistler, Canada	WSC	Craig Sawczuk- vp@wilerskiclub.org / 818.637.2469
Jan 29 - Feb 5, 2006	Telluride, CO	AEA	Léna Gorgi- 310.540.3996
Feb 04-11, 2006	Big Sky, MT	PRA/RATS	Gene Fulkerson- gene@pacificrimalliance.org/ 858.467.9469
Feb 04-11, 2006	Breckenridge, CO	ESC	Roy Megahan- jodiburt@earthlink.net / 818.780.5736
Feb 04-11, 2006	Moonlight Basin, MT	BCSC	Wendy Brennan- ski@bcskiclub.org / 310.358.3033
Feb 04-11, 2006	Steamboat, CO	LBSC	Ron Scholz- scholzska@aol.com / 714.898.7672
Feb 04-11, 2006	Telluride, CO	CSSC	Ray Craig- skiing@conejoski.com / 805.496.6720
Feb 04-11, 2006	Telluride, CO	LAC	Bonnie West- travel@lacouncil.org / 562.699.8880
Feb 04-11, 2006	Telluride, CO	FWSA	Lynnell Calkins- lynnell@aol.com / 310.370.4617
Feb 04-11, 2006	Telluride, CO	LPSC	Sylvia Barnes- 805.648.7040
Feb 04-11, 2006	Vail, CO	SSCLA	Al Tomei- 310.216.0776
Feb 06-12, 2006	Whistler, Canada	SAGA	Jim Corbett- tripreservations@sagala.org
Feb 11-18, 2006	Aspen, CO	CCSC	Dave Felker- david@bipro.com / 310.215.9999
Feb 11-18, 2006	Banff, Canada	4SW	David Kendrick- 323.293.3309
Feb 11-18, 2006	Banff, Canada	ASBCLA	Steve Ott- Steve.Ott@water.ladwp.com / 661.269.3929
Feb 11-18, 2006	Banff, Canada	SBSC	Jerry McGhee- 626.353.0930
Feb 23-27, 2006	Jackson Hole, WY	SAGA	Jim Corbett- tripreservations@sagala.org
Feb 23-27, 2006	Snowbasin, UT	LAC	Britt Johnson- 310.379.8972
Feb 23-28, 2006	Lake Tahoe, CA	SBSSC	Dennis Dierenfield- 805.965.3137
Feb 25, 2006	Snow Valley, CA	4SW	David Kendrick- 323.293.3309
Mar 03-08, 2006	Aleyska, Alaska	CCSC	Dave Felker- david@bipro.com / 310.215.9999
Mar 03-18, 2006	Val Thorens, France	PRA/RATS	Gene Fulkerson- gene@pacificrimalliance.org/ 858.467.9469

Club Legend found on page 14

28 — 2005 - 2006 LAC Directory

More Trips by Date on page 29



ASPEN SNOWMASS®
THE POWER OF FOUR

**FOUR MOUNTAINS
ONE LIFT TICKET**

National Sales 800-525-6200
gsales@aspensnowmass.com
www.aspensnowmass.com/groups

More Trips by Date — Continued from page 28

* Club Legend found on page 14

Dates	Destination	Club *	Contact
Mar 11-16, 2006	Zermatt, Switzerland	FWSA	Tucker Hoffmann- tkhoffmann@aol.com / 510.278.5900
Mar 11-18, 2006	Park City	CSSC	Ray Craig- skiing@conejoski.com / 805.496.6720
Mar 14-18, 2006	Prague, Czech Rep.	LAC	Bonnie West- travel@lacouncil.org / 562.699.8880
Mar 15-15, 2006	Andorra/Barcelona	LPSC	Sylvia Barnes- 805.648.7040
Mar 17-19, 2006	Kirkwood, CA	FWRA	Kathy Faris- competition@lacouncil.org / 310.470.2522
Mar 17-19, 2006	Park City, UT	SBSC	Jerome Cannon- 562.900.0074
Mar 17-25, 2006	Kitzbühel, Austria	LAC	Bonnie West- travel@lacouncil.org / 562.699.8880
Mar 18, 2006	Snow Valley, CA	4SW	David Kendrick- 323.293.3309
Mar 18-25, 2006	Istanbul, Turkey	PRA/RATS	Gene Fulkerson- gene@pacificrimalliance.org/ 858.467.9469
Mar 24-26, 2006	Heavenly, CA	4SW	David Kendrick- 323.293.3309
Mar 25-31, 2006	Greek Islands	PRA/RATS	Gene Fulkerson- gene@pacificrimalliance.org/ 858.467.9469
Mar 4-11, 2006	Jackson Hole, WY	LBSC	Ron Scholz- scholzska@aol.com / 714.898.7672
Aug TBA 2006	New Zealand/Australia	PRA/RATS	Gene Fulkerson- gene@pacificrimalliance.org/ 858.467.9469
Aug TBA 2006	South America	SAGA	Jim Corbett- tripreservations@sagala.org

2005 - 2006 LAC Directory — 29

Trips by Destination

Destination	Dates	Club *	Contact
Mar 03-08, 2006	Aleyska, Alaska	CCSC	Dave Felker– david@bipro.com / 310.215.9999
Mar 15-15, 2006	Andora/Barcelona	LPSC	Sylvia Barnes– 805.648.7040
Jan 15-22, 2006	Aspen	SAGA	Jim Corbett– tripreservations@sagala.org
Feb 11-18, 2006	Aspen, CO	CCSC	Dave Felker– david@bipro.com / 310.215.9999
Dec 03-08, 2005	Aspen/Snowmass, CO	4SW	David Geiger– 714.991.8428
Aug TBA 2006	Australia	PRA/RATS	Gene Fulkerson– gene@pacificrimalliance.org / 858.467.9469
Feb 11-18, 2006	Banff, Canada	4SW	David Kendrick– 323.293.3309
Feb 11-18, 2006	Banff, Canada	ASBCLA	Steve Ott– Steve.Ott@water.ladwp.com / 661.269.3929
Feb 11-18, 2006	Banff, Canada	SBSC	Jerry McGhee– 626.353.0930
Feb 04-11, 2006	Big Sky, MT	PRA/RATS	Gene Fulkerson– gene@pacificrimalliance.org / 858.467.9469
Jan 28 - Feb 4, 2006	Big Sky, MT	SBSSC	Greg Loshak– 805.565.2070
Feb 04-11, 2006	Breckenridge, CO	ESC	Roy Megahan– jodiburt@earthlink.net / 818.780.5736
Feb 04-11, 2006	Crested Butte, CO	GSC	Ann Lawson– lawild7@aol.com / 323-662-2019
Jan 08-15, 2006	Crested Butte, CO	OTHGLA	Joanne Puleo– suzanneewithjim@aol.com / 818.360.0027
Mar 25-31, 2006	Greek Islands	PRA/RATS	Gene Fulkerson– gene@pacificrimalliance.org / 858.467.9469
Jan 12-16, 2006	Heavenly, CA	4SW	Stephanie Hemphill– 310.644.3099
Mar 24-26, 2006	Heavenly, CA	4SW	David Kendrick– 323.293.3309
Mar 18-25, 2006	Istanbul, Turkey	PRA/RATS	Gene Fulkerson– gene@pacificrimalliance.org / 858.467.9469
Mar 4-11, 2006	Jackson Hole, WY	LBSC	Ron Scholz–scholzski@aol.com / 714.898.7672
Feb 23-27, 2006	Jackson Hole, WY	SAGA	Jim Corbett– tripreservations@sagala.org
Dec 07-11, 2005	Keystone, CO	FWRA	Kathy Faris– competition@lacouncil.org / 310.470.2522
Mar 17-19, 2006	Kirkwood, CA	FWRA	Kathy Faris– competition@lacouncil.org / 310.470.2522
Mar 17-25, 2006	Kitzbühel, Austria	CSSC	Ray Craig– skiing@conejoski.com / 805.496.6720
Mar 17-25, 2006	Kitzbühel, Austria	LAC	Bonnie West– travel@lacouncil.org / 562.699.8880
Jan 12-16, 2006	Lake Tahoe, CA	SBSC	Iris Williams– 310.638.2826
Feb 23-28, 2006	Lake Tahoe, CA	SBSSC	Dennis Dierenfield– 805.965.3137
Feb 04-11, 2006	Moonlight Basin, MT	BCSC	Wendy Brennan– ski@bcskiclub.org / 310.358.3033
Jan 21, 2006	Mountain High, CA	4SW	David Kendrick– 323.293.3309
Dec 17, 2005	Mountain High, CA	SBSC	Iris Williams– 310.638.2826
Aug TBA 2006	New Zealand	PRA/RATS	Gene Fulkerson– gene@pacificrimalliance.org / 858.467.9469
Mar 11-18, 2006	Park City	CSSC	Ray Craig– skiing@conejoski.com / 805.496.6720
Mar 17-19, 2006	Park City, UT	SBSC	Jerome Cannon– 562.900.0074

Club Legend found on page 14

More Trips by Destination on page 31

More Trips by Destination — Continued from page 30

* Club Legend found on page 14

Destination	Dates	Club *	Contact
Mar 14-15, 2006	Prague, Czech	CSSC	Ray Craig– skiing@conejoski.com / 805.496.6720
Mar 14-18, 2006	Prague, Czech	LAC	Bonnie West– travel@lacouncil.org / 562.699.8880
Feb 25, 2006	Snow Valley, CA	4SW	David Kendrick– 323.293.3309
Mar 18, 2006	Snow Valley, CA	4SW	David Kendrick– 323.293.3309
Feb 23-27, 2006	Snowbasin, UT	LAC	Britt Johnson– 310.379.8972
Jan 13-16, 2006	Snowbasin, UT	LPSC	Sylvia Barnes– 805.648.7040
Aug TBA 2006	South America	SAGA	Jim Corbett– tripreservations@sagala.org
Jan 27-Feb 3, 2007	Steamboat, CO	FWSA	Lynnell Calkins– lynnell@aol.com / 310.370.4617
Feb 04-11, 2006	Steamboat, CO	LBSC	Ron Scholz–scholzski@aol.com / 714.898.7672
Jan 29 - Feb 5, 2006	Telluride, CO	AEA	Léna Gorgi– 310.540.3996
Feb 04-11, 2006	Telluride, CO	CSSC	Ray Craig– skiing@conejoski.com / 805.496.6720
Feb 04-11, 2006	Telluride, CO	FWSA	Lynnell Calkins– lynnell@aol.com / 310.370.4617
Feb 04-11, 2006	Telluride, CO	LAC	Bonnie West– travel@lacouncil.org / 562.699.8880
Feb 04-11, 2006	Telluride, CO	LPSC	Sylvia Barnes– 805.648.7040
Dec 28 - Jan 1, 2006	Utah	CSSC	Ray Craig– skiing@conejoski.com / 805.496.6720
Feb 04-11, 2006	Vail, CO	SSCLA	Al Tomei– 310.216.0776
Mar 03-18, 2006	Val Thorens, France	PRA/RATS	Gene Fulkerson– gene@pacificrimalliance.org / 858.467.9469
Feb 06-12, 2006	Whistler, Canada	SAGA	Jim Corbett– tripreservations@sagala.org
Jan 28 - Feb 4, 2006	Whistler, Canada	WSC	Craig Sawczuk– vp@wilerskiclub.org / 818.637.2469
Mar 11-16, 2006	Zermatt, Switzerland	FWSA	Tucker Hoffmann– tkhoffmann@aol.com / 510.278.5900

Mammoth Trips

Dates	Club *	Contact
Nov 18-20, 2005	TU	Michelle McCarthy– mvdpt@yahoo.com / 310.417.8303
Nov 23-27, 2005	KSC	Julie Evans– julie90010@gmail.com
Nov 23-27, 2005	LPSC	Tom Reed– 805.485.6717
Dec 02-04, 2006	LPSC	Tom Reed– 805.485.6717
Dec 04-09, 2005	Rokka	Jessica Freeman– skiinggrandma@msn.com / 805.520.3460
Dec 08-11, 2005	TU	Michelle McCarthy– mvdpt@yahoo.com / 310.417.8303
Dec 09-11, 2005	4SW	David Kendrick– 323.293.3309
Dec 09-11, 2005	SSSC*	Chris Kishida– president@slopesurfers.org / 213.742.1330
Dec 09-11, 2005	CCSC	Debby Noveshen– debbiskis@aol.com / 323.931.7139
Dec 09-11, 2005	CSSC	Pati Albert– mammoth@conejoski.org / 805.526.8968
Dec 09-11, 2005	ESC	Roy Megahan– jodiburt@earthlink.net / 818.780.5736

* Club Legend found on page 14

More Mammoth Trips on page 32

Dates	Club *	Contact
Dec 09-11, 2005	KSC	Julie Evans— julie90010@gmail.com
Dec 09-11, 2005	LBSC	Julie Elder— skyelder@earthlink.net / 562.437.3948
Dec 09-11, 2005	SSCLA	Alen Elowe— 310.398.9914
Dec 09-18, 2005	LAC	John Funtsch— jfuntsch@msn.com / 310.545.9349
Dec 12-16, 2005	AEA	Léna Gorgi— 310.540.3996
Dec 13-16, 2005	TRI	Ron Hamer— 909.985.3370
Dec 30 - Jan 2, 2006	KSC	Julie Evans— julie90010@gmail.com
Jan 05-08, 2006	SBSSC	Greg Loshak— 805.565.2070
Jan 06-08, 2006	4SW	Jane Gutierrez— 310.721.3944
Jan 06-08, 2006	AEA	Léna Gorgi— 310.540.3996
Jan 06-08, 2006	SSSC*	Chris Kishida— president@slopesurfers.org / 213.742.1330
Jan 06-08, 2006	CCSC	Debbi Noveshen— debbiskis@aol.com / 323.931.7139
Jan 06-08, 2006	LBSC	Julie Elder— skyelder@earthlink.net / 562.437.3948
Jan 06-08, 2006	LPSC	Tom Reed— 805.485.6717
Jan 06-08, 2006	SSCLA	Alen Elowe— 310.398.9914
Jan 06-08, 2006	TRI	Mary Albritton— 562.856.0922
Jan 06-08, 2006	WSC	Rob Townsend— trip@wailersskiclub.org / 661.263.6931
Jan 13-16, 2006	SAGA	Jim Corbett— tripreservations@sagala.org
Jan 17-19, 2006	LPSC	Tom Reed— 805.485.6717
Jan 19-22, 2006	SBSSC	Greg Loshak— 805.565.2070
Jan 20-22, 2006	AEA	Léna Gorgi— 310.540.3996
Jan 20-22, 2006	ESC	Roy Megahan— jodiburt@earthlink.net / 818.780.5736
Jan 20-22, 2006	KSC	Julie Evans— julie90010@gmail.com
Jan 20-22, 2006	WSC	Rob Townsend— trip@wailersskiclub.org / 661.263.6931
Jan 20-23, 2006	SSSC*	Chris Kishida— president@slopesurfers.org / 213.742.1330
Jan 22-27, 2006	OTHGLA	Marilyn Mansfield— chantey@lafn.org / 310.322.5150
Jan 26-29, 2006	LBSC	Julie Elder— skyelder@earthlink.net / 562.437.3948
Jan 26-29, 2006	TRI	Ron & Elaine Guidotto— 909.947.4506
Jan 27-29, 2006	4SW	Joe Vinson— 310.670.8667
Jan 27-29, 2006	SAGA	Jim Corbett— tripreservations@sagala.org
Jan 27-29, 2006	ASBCLA	Cheryl Hasegawa— chasegawa@asbcla.org
Jan 27-29, 2006	CCSC	Debbi Noveshen— debbiskis@aol.com / 323.931.7139
Jan 27-29, 2006	CSSC	Pati Albert— mammoth@conejoski.org / 805.526.8968
Jan 27-29, 2006	SSCLA	Alen Elowe— 310.398.9914
Jan 27-29, 2006	TU	Michelle McCarthy— mvdpt@yahoo.com / 310.417.8303
Feb 03-05, 2006	KSC	Julie Evans— julie90010@gmail.com
Feb 06-08, 2006	LPSC	Tom Reed— 805.485.6717
Feb 09-13, 2006	SBSSC	Greg Loshak— 805.565.2070
Feb 10-12, 2006	SSSC*	Chris Kishida— president@slopesurfers.org / 213.742.1330
Feb 10-12, 2006	CCSC	Debbi Noveshen— debbiskis@aol.com / 323.931.7139
Feb 10-12, 2006	CSSC	Pati Albert— mammoth@conejoski.org / 805.526.8968
Feb 10-12, 2006	LPSC	Tom Reed— 805.485.6717
Feb 17-19, 2006	KSC	Julie Evans— julie90010@gmail.com
Feb 17-20, 2006	SAGA	Jim Corbett— tripreservations@sagala.org
Feb 17-20, 2006	WSC	Rob Townsend— trip@wailersskiclub.org / 661.263.6931
Feb 23-26, 2006	LBSC	Julie Elder— skyelder@earthlink.net / 562.437.3948
Feb 23-26, 2006	TRI	Bonnie West— 562.699.8880
Feb 24-26, 2006	AEA	Léna Gorgi— 310.540.3996
Feb 24-26, 2006	ASBCLA	Charles Lai— Charles.Lai@west.boeing.com
Feb 24-26, 2006	ESC	Roy Megahan— jodiburt@earthlink.net / 818.780.5736
Feb 24-26, 2006	TU	Michelle McCarthy— mvdpt@yahoo.com / 310.417.8303

* Club Legend found on page 14

More Mammoth Trips on page 33

Dates	Club *	Contact
Feb 24-27, 2006	SSSC*	Chris Kishida— president@slopesurfers.org / 213.742.1330
Feb 26-Mar 03, 2006	OTHGLA	Marilyn Mansfield— chantey@lafn.org / 310.322.5150
Mar 02-05, 2006	CSSC	Pati Albert— mammoth@conejoski.org / 805.526.8968
Mar 03-04, 2006	SBSC	Iris Williams— 310.638.2826
Mar 03-05, 2006	4SW	David Kendrick— 323.293.3309
Mar 03-05, 2006	CCSC	Debbi Noveshen— debbiskis@aol.com / 323.931.7139
Mar 03-05, 2006	CSSC	Pati Albert— mammoth@conejoski.org / 805.526.8968
Mar 03-05, 2006	KSC	Julie Evans— julie90010@gmail.com
Mar 03-05, 2006	LBSC	Julie Elder— skyelder@earthlink.net / 562.437.3948
Mar 03-05, 2006	LPSC	Tom Reed— 805.485.6717
Mar 03-05, 2006	SSCLA	Alen Elowe— 310.398.9914
Mar 03-05, 2006	SSSC*	Chris Kishida— president@slopesurfers.org / 213.742.1330
Mar 03-05, 2006	TRI	Bonnie West— 562.699.8880
Mar 03-05, 2006	WSC	Rob Townsend— trip@wailersskiclub.org / 661.263.6931
Mar 04-05, 2006	TRI	Bonnie West— 562.699.8880
Mar 09-12, 2006	SBSSC	Greg Loshak— 805.565.2070
Mar 10-12, 2006	AEA	Léna Gorgi— 310.540.3996
Mar 10-12, 2006	SAGA	Jim Corbett— tripreservations@sagala.org
Mar 12-17, 2006	OTHGLA	Marilyn Mansfield— chantey@lafn.org / 310.322.5150
Mar 16-19, 2006	TRI	Debbie Russell— 909.996.3245
Mar 17-19, 2006	KSC	Julie Evans— julie90010@gmail.com
Mar 17-19, 2006	TU	Michelle McCarthy— mvdpt@yahoo.com / 310.417.8303
Mar 17-20, 2006	SSSC*	Chris Kishida— president@slopesurfers.org / 213.742.1330
Mar 23-26, 2006	LBSC	Julie Elder— skyelder@earthlink.net / 562.437.3948
Mar 23-26, 2006	SAGA	Jim Corbett— tripreservations@sagala.org
Mar 24-26, 2006	ASBCLA	Craig & Evie Pitcairn— therockpit@aol.com
Mar 24-26, 2006	CCSC	Debbi Noveshen— debbiskis@aol.com / 323.931.7139
Mar 24-26, 2006	CSSC	Pati Albert— mammoth@conejoski.org / 805.526.8968
Mar 24-26, 2006	ESC	Roy Megahan— jodiburt@earthlink.net / 818.780.5736
Mar 24-26, 2006	SSCLA	Alen Elowe— 310.398.9914
Mar 24-26, 2006	WSC	Rob Townsend— trip@wailersskiclub.org / 661.263.6931
Mar 25-26, 2006	FWRA	Kathy Faris— competition@lacouncil.org / 310.470.2522
Mar 30-Apr 2, 2006	SBSSC	Greg Loshak— 805.565.2070
Mar 31-Apr 02, 2006	AEA	Léna Gorgi— 310.540.3996
Mar 31-Apr 02, 2006	SSSC*	Chris Kishida— president@slopesurfers.org / 213.742.1330
Mar 31-Apr 02, 2006	KSC	Julie Evans— julie90010@gmail.com
Apr 02-07, 2006	OTHGLA	Marilyn Mansfield— chantey@lafn.org / 310.322.5150
Apr 07-09, 2006	SAGA	Jim Corbett— tripreservations@sagala.org
Apr 07-09, 2006	SSSC*	Chris Kishida— president@slopesurfers.org / 213.742.1330
Apr 07-09, 2006	KSC	Julie Evans— julie90010@gmail.com
Apr 07-09, 2006	LPSC	Tom Reed— 805.485.6717
Apr 07-09, 2006	WSC	Rob Townsend— trip@wailersskiclub.org / 661.263.6931
Apr 14-16, 2006	ESC	Roy Megahan— jodiburt@earthlink.net / 818.780.5736
Apr 21-23, 2006	SAGA	Jim Corbett— tripreservations@sagala.org
Apr 21-23, 2006	SSSC*	Chris Kishida— president@slopesurfers.org / 213.742.1330
Apr 21-23, 2006	CSSC	Pati Albert— mammoth@conejoski.org / 805.526.8968
Apr 21-23, 2006	TU	Michelle McCarthy— mvdpt@yahoo.com / 310.417.8303
Apr 28-30, 2006	4SW	David Kendrick— 323.293.3309
Apr 28-30, 2006	AEA	Léna Gorgi— 310.540.3996
Apr 28-30, 2006	WSC	Rob Townsend— trip@wailersskiclub.org / 661.263.6931
May 19-21, 2006	TU	Michelle McCarthy— mvdpt@yahoo.com / 310.417.8303

SSSC trips are for BCSC, HSC, SBSC, SSSC, TRW

Telluride, Colorado

February 4-11, 2006

Trip Includes—

- 7 nights Lodging [double occupancy]
- 5 out of 7 day Lift Ticket
- Welcome Party
- 3 Races
- Mountain Picnic
- Après Ski Party
- Pub Crawl
- Farewell Awards Banquet
- Registration

**\$775-
\$1125*+
air & transfers**

Payment Schedule & Cancellation Penalty—

Deposit	Due By	Cancellation
\$700 pp	NOW	\$100 pp
Balance	Nov 1, 2005	\$100 pp & cost

Reservations & Information—

Bonnie West
travel@lacouncil.org or 562.699.8880

* Price depends on choice of lodging

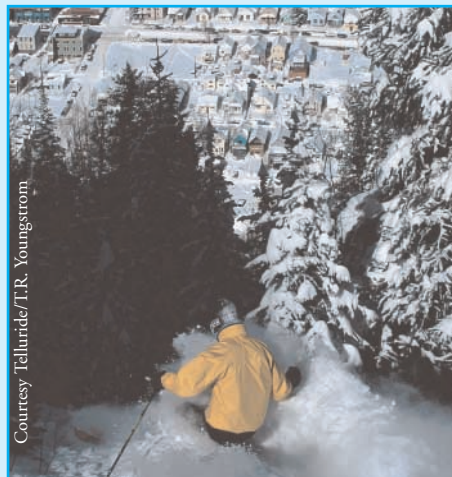
Telluride Mountain Stats

8,725 ft Town Elevation & Coonskin Base
9,540 ft Village Elevation
12,260 ft Gold Hill Summit
3,535 ft vertical drop
84 trails
24% beginner / 38% int / 38% adv-expert
16 lifts [2 gondola, 7 quads, 2 triples, 2 dbls, 3 surface]
4.6 mi Galloping Goose is longest run
1,700 acres skiable terrain
18.6 miles nordic trails
309 inches average snowfall per year
50 Bars & Restaurants
69 Shops and Galleries

CST# 2036983-40

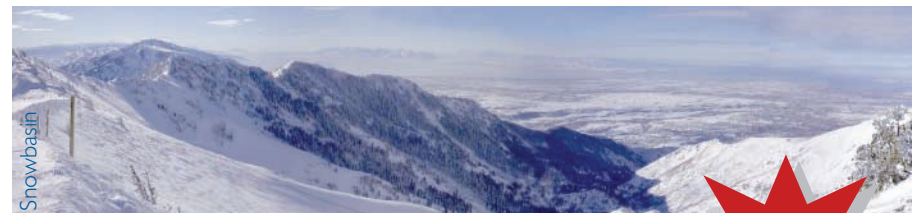


TELLURIDE



Snowbasin & Powder Mountain, Utah

February 23-27, 2006



**\$630*
per person**

Trip Includes—

- Round Trip Air from LAX to Salt Lake City
- Round Trip Transfers from Airport to Hotel
- 4 Nights Lodging at the Holiday Inn Express (double occ.) in Layton, UT
- Buffet Breakfast each Morning
- 4 Days of Lift Tickets—2 at Powder Mountain and 2 at Snowbasin
- Round Trip Shuttle from the Hotel to the Designated Ski Resort each day
- Party One Night at the Hotel

Deposit & Cancellation Policy—

Date	Deposit Due	Cancellation ⁺
Sept 23, 2005	\$200	none
Nov 8, 2005		\$50
Dec 22, 2005		\$630 ⁺ [unless replaced]
Jan 20, 2006	Balance *	

⁺ Cancellations must be submitted **in writing** to LA Council. After December 22, 2006, cancellations will lose all money unless replaced. Replacements will be charged a minimum \$50 plus any fees assessed by the airline for a name change.



Powder Mountain

snowbasin
A SUN VALLEY RESORT

Reservations & Information—

- **Make checks payable to Tour Pros** and send to
Britt Johnson, 321 - 28th St., Hermosa Beach, CA 90254
- Contact Britt at 310.379.8972 for Information

* Price is subject to change if suppliers costs such as airline taxes, fuel charges, etc. are adjusted.



LA Council of Ski Club presents—

Kitzbühel, Austria

March 17-25, 2006

Trip includes—

- ♦ Round trip economy air from LAX on Lufthansa
- ♦ Round trip transfers from airport to Kitzbühel
- ♦ 7 nights lodging at 3-star Hotel Edelweiss (Dbl. Occ.)
- ♦ Breakfast & dinner daily
 - Farewell Gala dinner
- ♦ 2 Euros/day toward drink
- ♦ Après Ski coffee & cake buffet
- ♦ Local Taxes & Service Charges in Europe
- ♦ Local English speaking representative
- ♦ Vacation Protection Plan

\$1,425*

Does NOT Include—

- ♦ Lift tickets
- ♦ Air taxes, fees, fuel charges (est. \$210)

Reservations & Information—

Bonnie West at travel@lacouncil.org or 562.699.8880

Payment & Cancellation Schedule—

Deposit	Due By	Cancellation Fee
\$700 pp	Deposit due now	\$100
\$500 pp	December 1, 2005	\$250
Balance	December 30, 2005	\$350
	January 30, 2006	no refund unless replaced



* Pricing based on 1 Euro = \$1.25. Trip price could change, depending on the exchange rate at time of final payment.

CST 1006225-50

\$215*

Prague, Czech Republic

March 14-18, 2006

Prague pre-trip includes—

- ♦ 3 nights at a Hotel (Dbl. Occ.)
 - Daily breakfast
- ♦ Half day city tour with English speaking guide
 - Entrance to Vladislav Hall in Prague Castle
- ♦ Prague to Kitzbühel transfer



"God's Postcard?"
Here it is."
Ski Magazine

Banff-Lake Louise is the kind of place alpine dreams are made of. Uncrowded skiing in great Canadian Rockies powder at one of the most beautiful places on earth. Mountain towns don't get much better than this.

3 Ski Areas on One Ticket • 7700 Acres • 200 Retail Shops • Museums • Hot Springs • Theaters • Skating • Spas • 130 Restaurants

For reservations and information, visit us online at
www.SkiBig3.com
 or call toll free
1.877.754.7255

Our group brings out the fun in yours.

Amazing things happen when your group comes to one of the Intrawest playgrounds. The skiing is incomparable of course, the terrain perfect for all levels. But there's a whole lot more. Places for special activities, theme nights, unparalleled après and a feeling that the whole mountain resort revolves around your group. And it does. Book now and let the games begin.



We couldn't leave big enough alone.



Canadian Rockies ski in ski out.



The soul of Europe in the heart of North America.



Real people. Real experiences.



Escape the ordinary at Colorado's favorite.



Discover a whole new Squaw Valley.

INTRAWEST

For more information on all our programs contact us
1.888.581.4241 groups@intrawest.com www.intrawest.net/groups